

Room 1: San Gabriel Valley Wildfire Risk Reduction Buffer Zones

Financing the creation of wildfire risk buffer zones with fire access roads

Maybe go for a planning grant that includes community outreach and scoping.

Insurance cost saving or eligibility can justify the cost of buffers if wildfires are priced by insurance companies. I think the Department of Insurance has a workgroup on this topic.

Development of smaller pilot projects to test out different strategies

Develop/prioritize any research needs and partner with nearby academic universities.

Public/private partnerships to maintain buffer zones

Case studies from other regions

Depending on type of buffer implemented, make local partnerships for maintenance/stewardship

Scientists, insurance companies, communities all at the table

Ag land could be good buffer and partnership

Potential rezoning of land from residential to agricultural

Lot of expertise in the area that could help (i.e., Rancho Santa Ana Botanical Garden, Los Angeles Conservation Corps)

Enlist the California Conservation Corps

Community concerns and ecosystem concerns

Homeowners are losing insurance

SB 9 bill, lot splits, housing increase in not high fire risk areas (good thing) / but some neighborhoods not happy because densifying neighborhoods

Some of the buffer projects like golf courses or parks can increase the property values in the neighborhood, which may incentive them to support the project.

There is a concern for future housing needs and the demand for future development

Mudslide problems and potential for stormwater recharge

Potential pushback from environmental organizations if installing a barrier such as a golf course, park, etc.

Different type of fires (wind-driven fires coming from North (Santa Anas) a big concern)

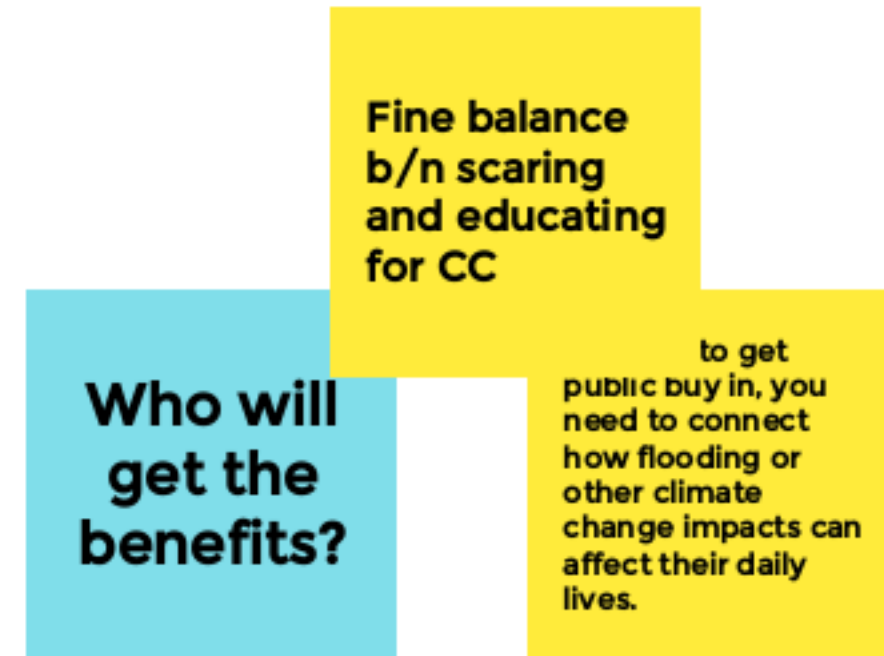
Fire fighting staging areas

Room 2: Flooding in Delta Agricultural Lands from SLR and Subsidence

Multiple players with varying jurisdictions and objectives



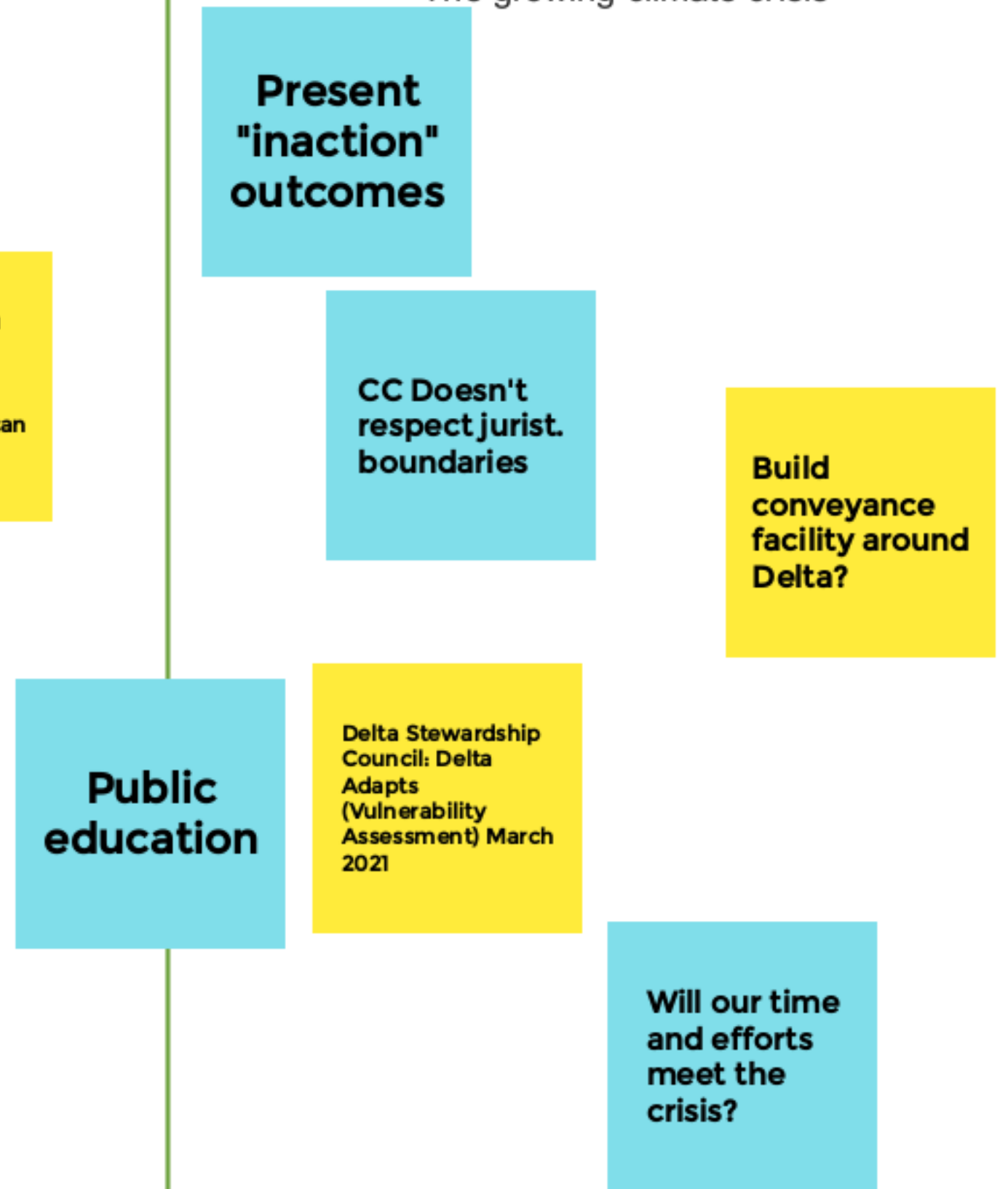
Political will and public support



Massive educational campaign/outreach. Make them scared! Paris Hilton's family owns an island in the Delta. Enlist her support.



The growing climate crisis



Room 3: RYSE Center Community Resilience Hub

Community-based decision making processes

County government and elected support

Health and wellness services?

APEN is an NGO - where is the city on this?

creating paid part-time community leadership roles

Do Richmond or County have sustainability, resilience or climate action plans?

leadership pathway program for local high schools

assess the different needs for routine operations vs "emergency" - in particular duration of potential emergency outages; stand alone period (24 hrs? 96 hrs?) vs operating with outside resources available?

Programming the building to be responsive to emergency, social and other services

plan for critical energy needs that can be met by on-site solar & storage, and strategy to cut other activities if needed to support extended energy cuts

Authentic partnerships in fundraising & implementation

Foundations that fund the stuff in column 1

GRID alternatives and Richmond BUILD

DTSC ECRG coming soon

What are existing Richmond emergency response plans for disasters, and how do other orgs integrate with those plans?

Look out for recently approved funds from governor

Richmond Community Foundation

Is Chevron any help?

State government support?

Seems like there are a lot of "extended" social services - reach out to those departments serving the types of programs RYSE provides

Political impact and leadership opportunities

Is Chevron any help?

Channeling youth energy and unfiltered ideas

Hosting politicians or community leaders for open discussion between them and the community

Get from ad-hoc to proactive in all levels of emergency and support services