

# Climate Change Resilience and Preparedness

**California Adaptation Forum:**

Advancing Local Energy Resilience through Community  
Engagement

September 8, 2016





# About PG&E & Our Business



We are focused on providing safe, reliable, affordable and clean energy to nearly **16 million** Californians.

**23,000**  
employees

**5.4 million**  
electric distribution  
customers

**4.4 million**  
gas distribution  
customers

**240+**  
cities served in  
California

**~55%**  
carbon free  
electricity

**7,684**  
MW of owned  
electric generation  
capacity

**\$63 billion**  
in assets

**\$17 billion**  
in revenues



*PG&E understands that there is no single approach to building climate change resilience. It involves taking a holistic approach to better understand, plan for and respond to climate change risks—and doing so in partnership with others.*

Link: <http://tinyurl.com/h6888c2>

Pacific Gas and Electric Company

# Climate Change Vulnerability Assessment



Together, Building  
a Better California



# PG&E's Approach to Climate Change Resilience

- **Robust emergency response plans and procedures** to address near-term risks, including storms and wildfires
- **Active engagement** at the federal, state, and local level
- **Risk assessment and operational planning** to assess longer-term risks and prioritize infrastructure investments
- **Staying abreast of the science** through in-house climate change science team

## CURRENTS

NEWS AND PERSPECTIVES FROM PACIFIC GAS AND ELECTRIC  
JUNE 23, 2015

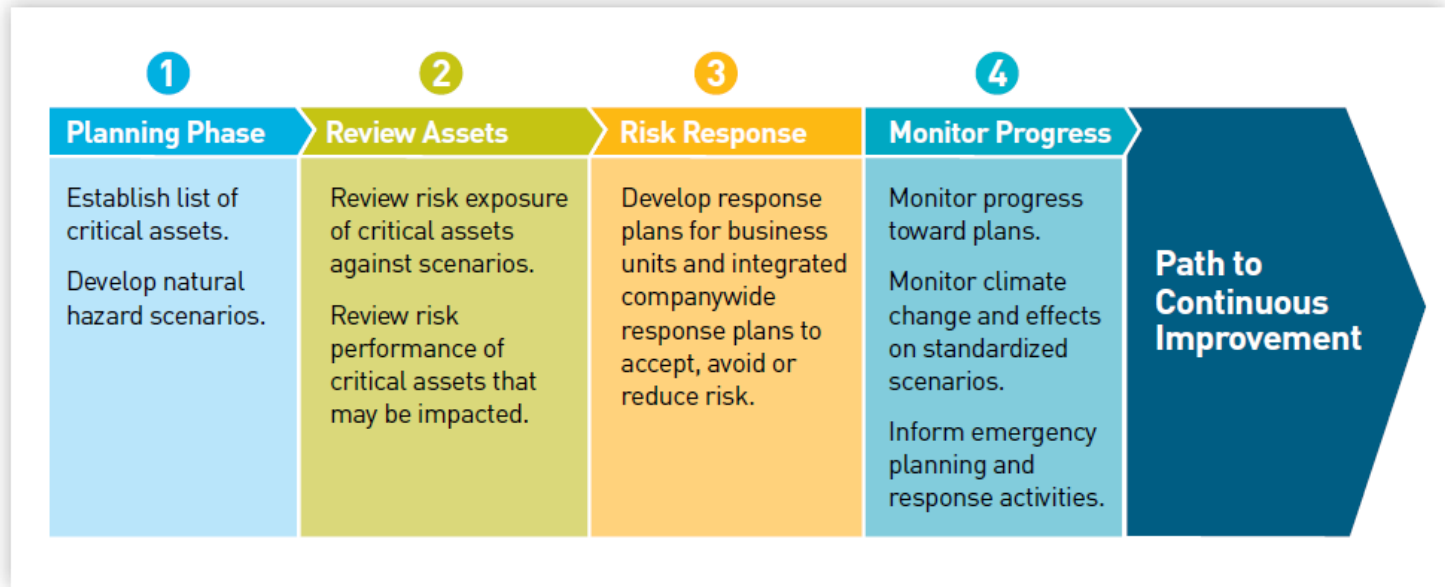
HOME | VIDEOS | LOCAL | PIPELINE SAFETY | SOCIAL MEDIA | NEXT100

Posted on April 22, 2015

### PG&E Participates in New U.S. Climate Resilience Partnership Between DOE and Utilities



# Risk Assessment: Natural Hazard Asset Performance



Phases of the NHAP initiative

**Long-term, multi-year, and holistic assessment of the risks from multiple natural hazard scenarios on PG&E assets:**

- Identifying potential impacts to PG&E assets
- Enabling the evaluation of climate-change-related risks to facilities and the development of necessary adaptation strategies





San Francisco



# Better Together: Resilient Communities Grant Program

- **\$1 million over five years** in grants to support local planning efforts to build greater climate resilience
- **Grant proposal criteria:**
  - Replicability
  - Partnerships
  - Disadvantaged communities focus
- **Will feature a different climate risk each year** and launch in 2017
- **All applicants must have a local government partner** within PG&E's service area
- **Advisory panel of community and sustainability leaders**

## CURRENTS

NEWS AND PERSPECTIVES FROM PACIFIC GAS AND ELECTRIC  
JUNE 9, 2016

HOME VIDEOS LOCAL PIPELINE SAFETY SOCIAL MEDIA NEXT100

Posted on June 2, 2016

### Energy Companies an Indispensable Ally in Combatting Climate Change, Earley Tells World Energy Ministers



**CLEAN ENERGY**  
MINISTERIAL





# Commitment to Action

STEP UP AND  
POWER DOWN



Step Up and Power Down is a partnership between PG&E and the Cities of San Francisco and San José that helps businesses take simple actions to reduce energy waste, for a more sustainable future and community





# Progress to Date

CAMPAIGN LAUNCHED: APRIL 2015 CAMPAIGN ENDS: DECEMBER 31, 2016

## SAN FRANCISCO

	GOAL	TOTAL*
PARTICIPANTS	600	684
GWh SAVED	20	18.5



Potential prize to support local energy efficiency projects.



## SAN JOSÉ

	GOAL	TOTAL*
PARTICIPANTS	400	431
GWh SAVED	25	24.5



Potential prize to support local energy efficiency projects.



\*As of August 15, 2016