

Energy Resilience through Community Engagement



California Adaptation Forum
Kathleen Ave, SMUD Energy R&D
September 8, 2016

Powering forward. Together.



Overview

- Context
- SMUD's Approach to Energy Resilience
- Business Evolution & Community Engagement

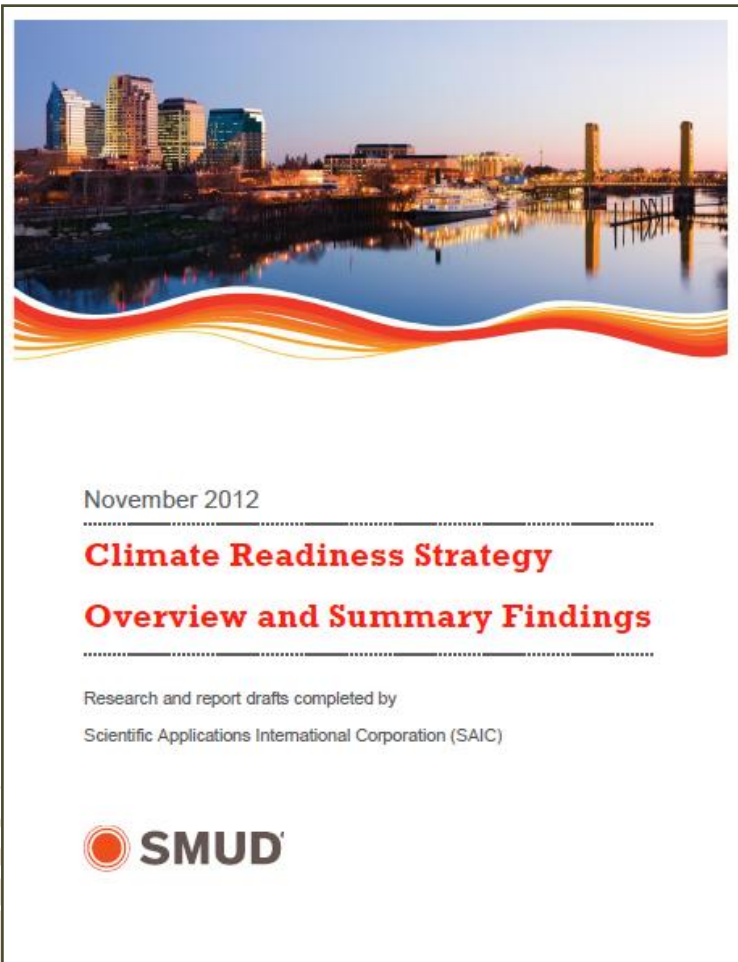


Title Slide Photo: BeholdingEye



- **SMUD Board Vision:** to ‘...increase energy efficiency, **reduce global warming...**’
- **SD 7 (b) – Environmental Leadership (b):** SMUD will provide leadership in the **reduction of the region’s total emissions of greenhouse gases** through **proactive programs** in all SMUD activities and development and support of national, State, and regional climate change policies and initiatives
- **SD 9 – Resource Planning:** Includes Sustainable Energy Supply Goal equivalent to a 90% reduction below 1990 GHG levels by 2050, 30% by 2020
- **SD 17 - Enterprise Risk Management:** Directs SMUD to maintain a risk management system that identifies, assesses, prudently manages and mitigates a variety of risks facing SMUD, **including climate change**
- **Partner Groups:** Energy R&D, Power Generation, Business Planning, Grid Assets, Emergency Management, Local Government, Risk Management, Facilities, Customer Programs, Customer Engagement, Supply Chain, Environmental Management, Treasury

Climate Readiness: 2016 Update Underway



- Track Climate Changes as an Enterprise Risk
- 4 year science update cycle
- Use findings in all long term planning (>5 years)
- Perform additional research and **support regional readiness efforts**



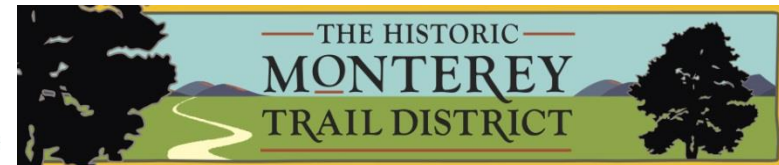
Building Partnerships for Community Energy Resilience: A case study

- **The opportunity:** Institute for Sustainable Communities Partnership for Resilient Communities Grant (\$250,000)
- **The community:** Low-income, predominantly non-White neighborhood in South Sacramento, in top 5-25% of CalEnviroScreen 2.0.
- **The proposal:** Integrate local job training with energy efficiency, urban greening, and emergency planning for family-owned small businesses to build community capacity and resilience.

The partners:



CAPITAL REGION
CLIMATE READINESS
COLLABORATIVE



Local
Government
Commission



UC DAVIS
UNIVERSITY OF CALIFORNIA



Project components

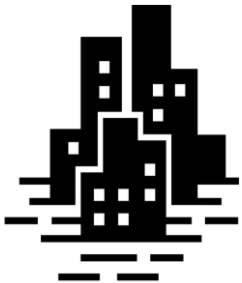


Train residents in solar installations and energy efficiency retrofits

Increase urban forestry to demonstrate compatibility of shade trees with solar panels



Targeted training for small businesses to encourage resiliency planning for extreme weather and other climate impacts



Desired outcomes

- Jobs and skills training to grow a local clean energy workforce
- Energy savings from EE and local solar generation benefitting neighborhood businesses
- Reduced Urban Heat Island effect and other health, social, and economic benefits of increased urban forestry
- Enhanced local capacity to recover from economic and climate shocks
- Place-based, locally delivered economic development



Thank you!



Kathleen Ave
(916)732-5302

Kathleen.ave@smud.org

@AveKathleen

Powering forward. Together.

